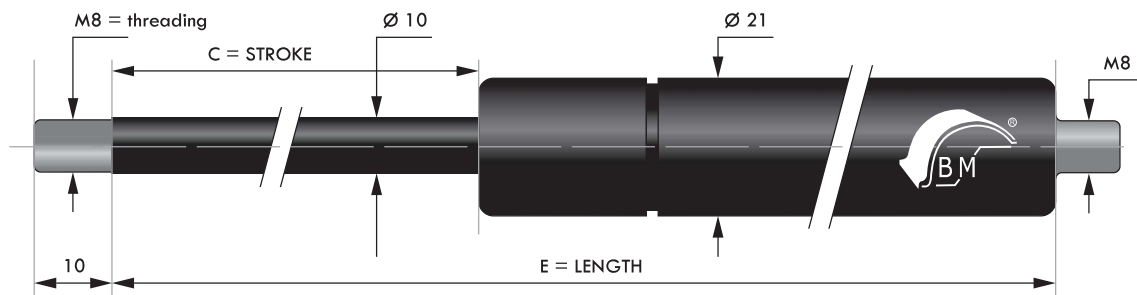
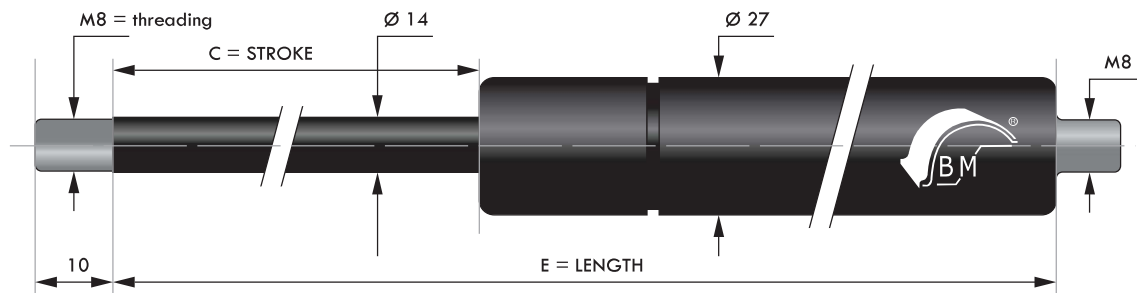


## COMPRESSION SPRINGS WITH M8 THREADED ENDS DIAMETER ROD 10



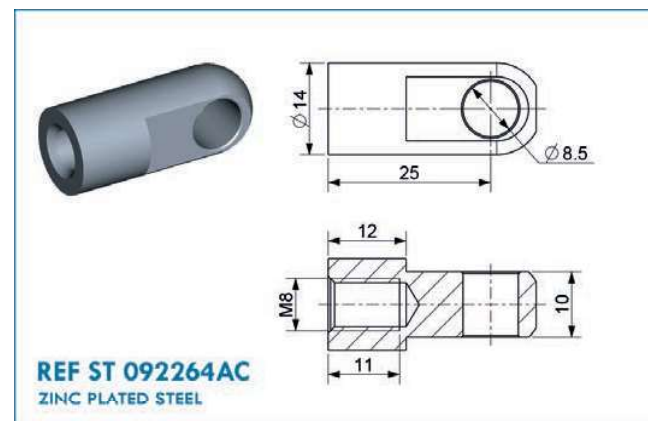
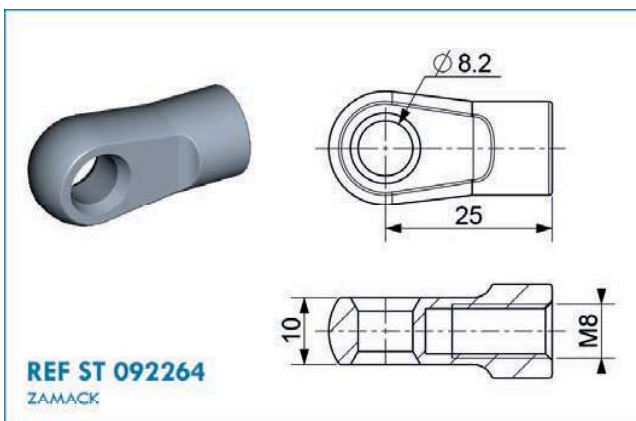
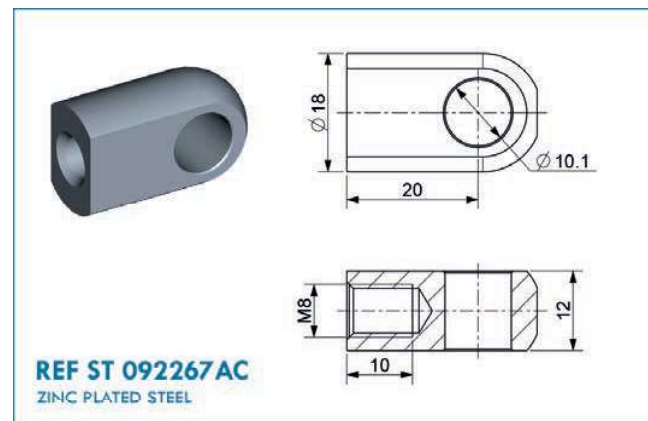
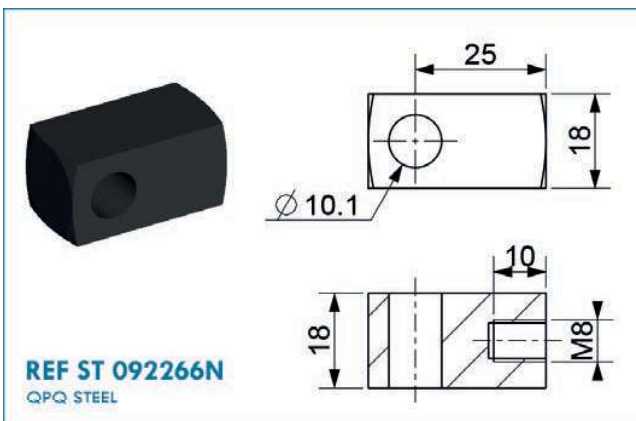
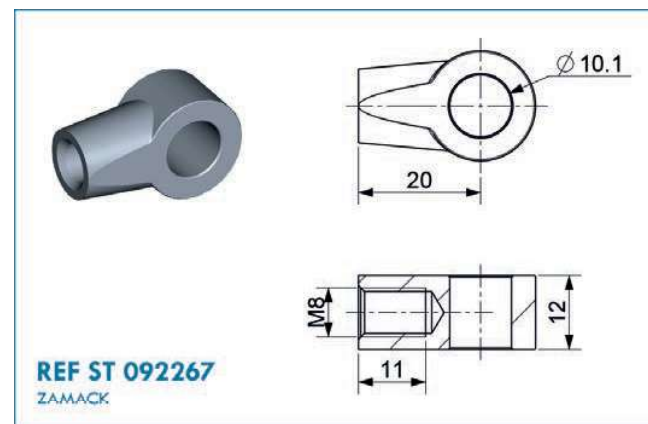
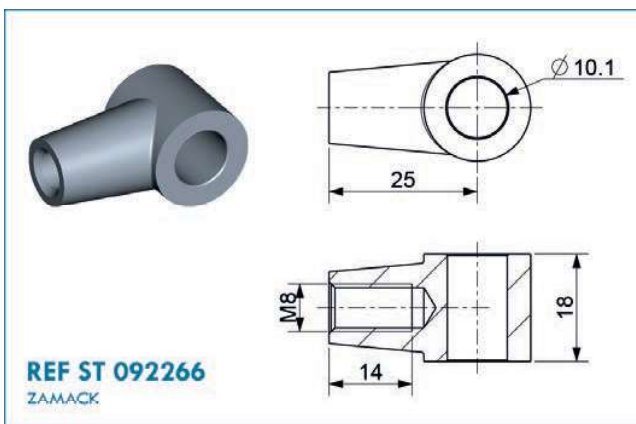
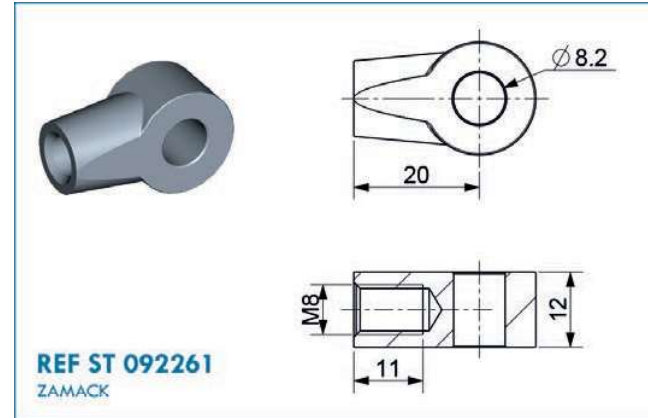
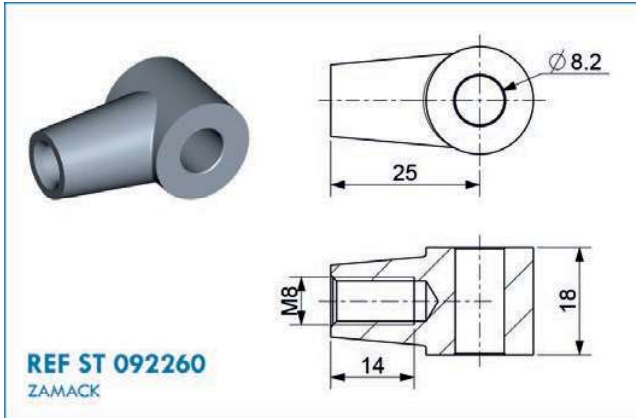
C - Stroke in mm	E - Length in mm	F1 - Force in Newtons	Reference
60	180	De 100 à 1150	ST 060 + F1 V + D10
100	255	De 100 à 1150	ST 100 + F1 V + D10
115	275	De 100 à 1150	ST 115 + F1 V + D10
150	355	De 100 à 1150	ST 150 + F1 V + D10
150	405	De 250 à 1150	ST 150 + F1 V + D10 E405
200	455	De 100 à 1150	ST 200 + F1 V + D10
200	455	De 100 à 1150	ST 200 + F1 V + D10 VA
250	555	De 100 à 1050	ST 250 + F1 V + D10
250	555	De 100 à 1050	ST 250 + F1 V + D10VA
250	610	De 100 à 1050	ST 250 + F1 V + D10 E610
300	655	De 100 à 1050	ST 300 + F1 V + D10
300	655	De 100 à 1050	ST 300 + F1 V + D10VA
300	711	De 100 à 1050	ST 300 + F1 V + D10 E711
350	735	De 100 à 1000	ST 350 + F1 + V D10 E735
350	755	De 100 à 1000	ST 350 + F1 V + D10
350	755	De 100 à 1000	ST 350 + F1 V + D10VA
400	855	De 100 à 900	ST 400 + F1 V + D10
400	855	De 100 à 900	ST 400 + F1 V + D10VA
440	960	De 100 à 900	ST 440+F1 V+D10 E960
500	1055	De 100 à 700	ST 500 + F1 V + D10
500	1055	De 100 à 700	ST 500 + F1 V + D10VA
550	1155	De 100 à 700	ST 550 + F1 V + D10VA
600	1255	De 100 à 700	ST 600 + F1 V + D10VA
650	1355	De 100 à 700	ST 650 + F1 V + D10VA
700	1455	De 100 à 700	ST 700 + F1 V + D10VA

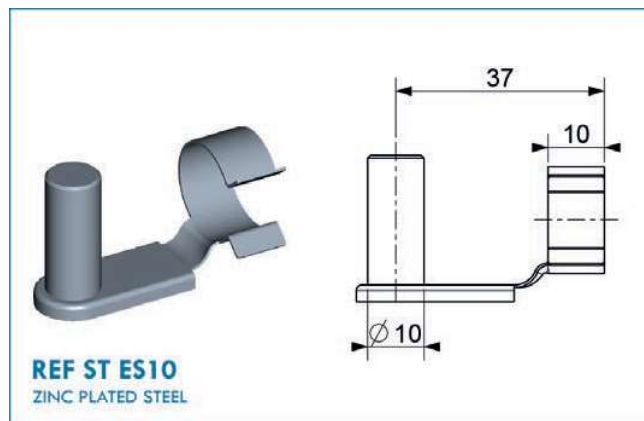
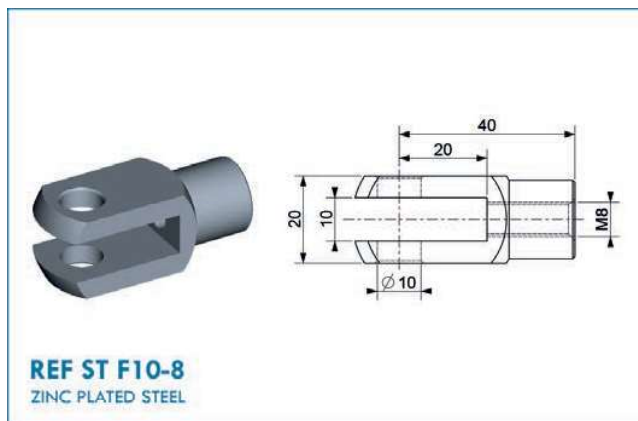
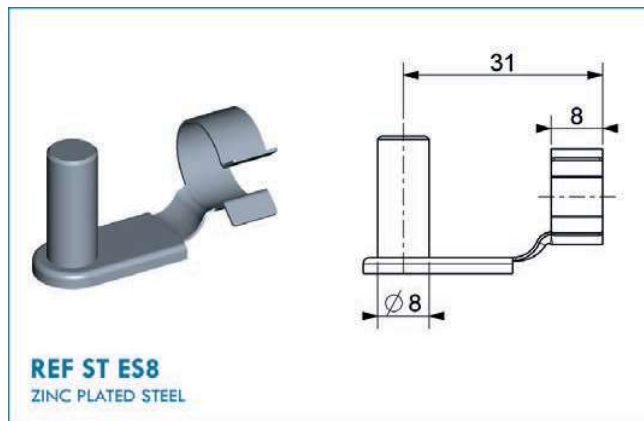
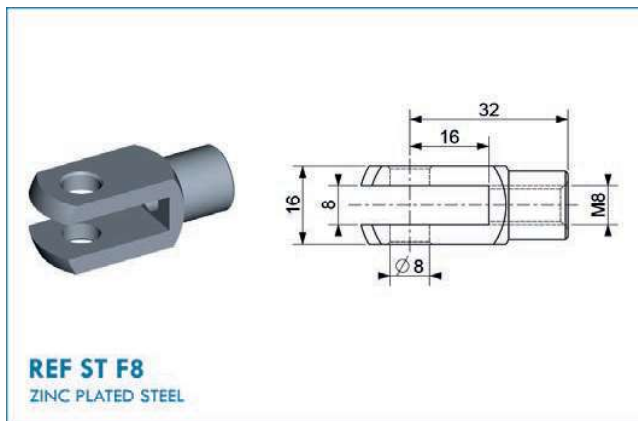
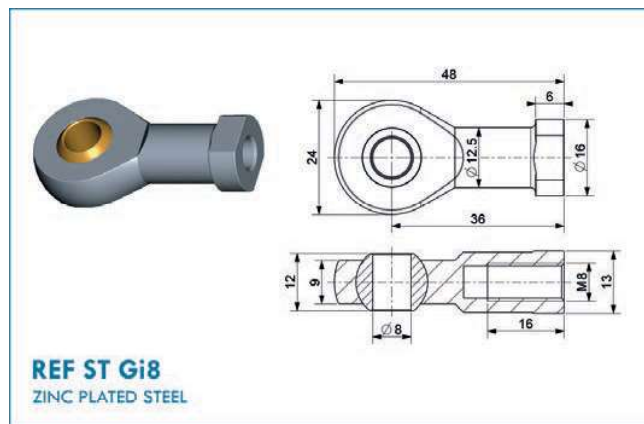
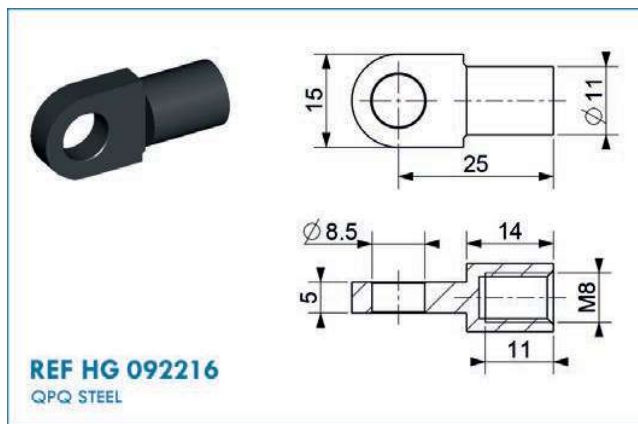
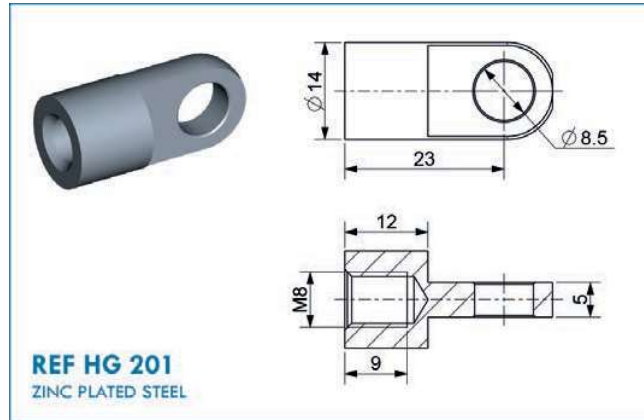
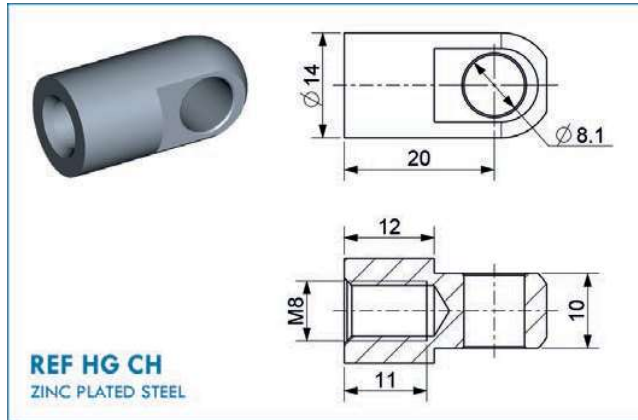
## COMPRESSION SPRINGS WITH M8 THREADED ENDS DIAMETER ROD 14



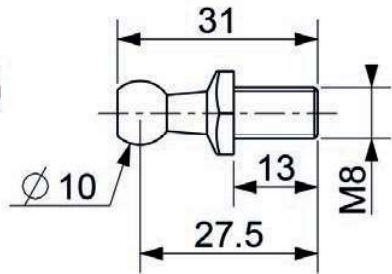
C - Stroke in mm	E - Length in mm	F1 - Force in Newtons	Reference
60	180	De 100 à 2100	ST 060 + F1 V + D14
100	255	De 100 à 2100	ST 100 + F1 V + D14
150	355	De 200 à 2100	ST 150 + F1 V + D14
200	455	De 200 à 2100	ST 200 + F1 V + D14
250	555	De 300 à 2100	ST 250 + F1 V + D14
300	655	De 300 à 2100	ST 300 + F1 V + D14
300	655	De 300 à 2100	ST 300 + F1 V + D14VA
350	755	De 300 à 2100	ST 350 + F1 V + D14
400	855	De 300 à 2100	ST 400 + F1 V + D14
450	955	De 300 à 2100	ST 450 + F1 V + D14
450	955	De 300 à 2100	ST 450 + F1 V + D14VA
500	1055	De 300 à 2100	ST 500 + F1 V + D14

## M8 STANDARD ACCESSORIES

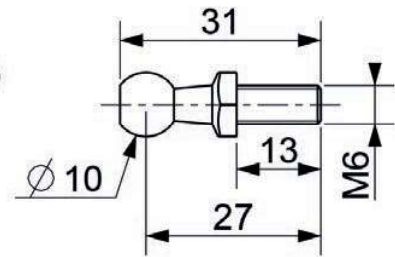




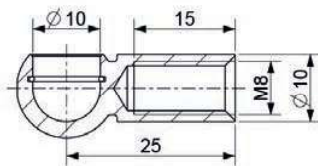
## M8 STANDARD ACCESSORIES



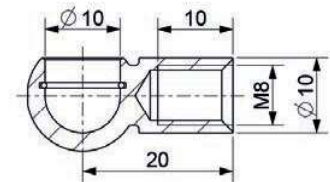
**REF ST 092990A**  
ZINC PLATED STEEL



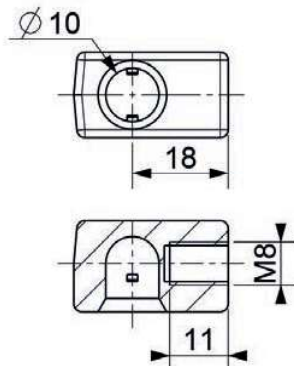
**REF ST 092989**  
ZINC PLATED STEEL



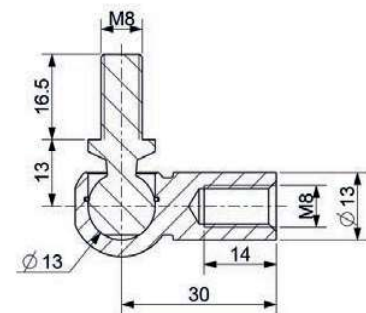
**REF ST 092214**  
ZINC PLATED STEEL



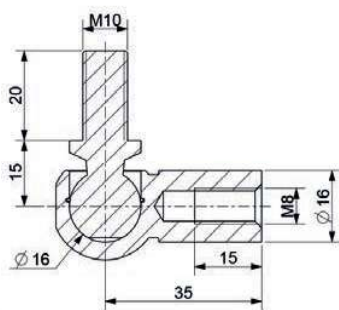
**REF ST 092215**  
ZINC PLATED STEEL



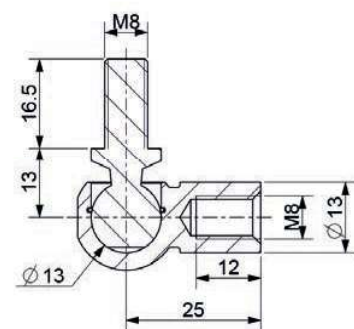
**REF ST 072421-8**  
PLASTIC



**REF ST 092262**  
ZINC PLATED STEEL

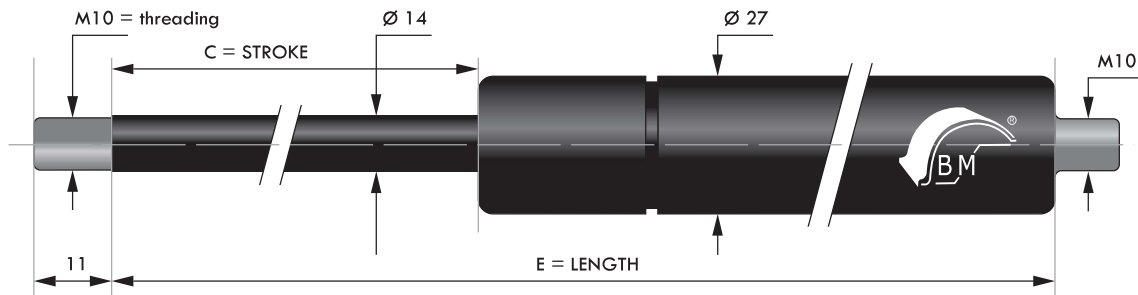


**REF ST 092262-10-8**  
PLASTIC



**REF ST 092265**  
ZINC PLATED STEEL

## COMPRESSION SPRINGS WITH M10 THREADED ENDS DIAMETER ROD 14



C - Stroke in mm	E - Length in mm	F1 - Force in Newtons	Reference
150	368	De 200 à 2100	ST 150 + F1 V + D14 E368 M10
200	455	De 200 à 2100	ST 200 + F1 V + D14 M10
250	555	De 300 à 2100	ST 250 + F1 V + D14 M10
300	655	De 300 à 2100	ST 300 + F1 V + D14 M10
350	755	De 300 à 2100	ST 350 + F1 V + D14 M10
400	855	De 300 à 2100	ST 400 + F1 V + D14 M10
450	955	De 300 à 2100	ST 450 + F1 V + D14 M10
500	1055	De 300 à 2100	ST 500 + F1 V + D14 M10
600	1255	De 300 à 2100	ST 600 + F1 V + D14 VA
650	1355	De 300 à 2100	ST 650 + F1 V + D14 VA
700	1455	De 300 à 1800	ST 700 + F1 V + D14 VA
750	1555	De 300 à 1800	ST 750 + F1 V + D14 VA
800	1655	De 300 à 1500	ST 800 + F1 V + D14 VA
900	1855	De 300 à 1500	ST 900 + F1 V + D14 VA

VA=Valve

## RELEASE VALVE TOOL

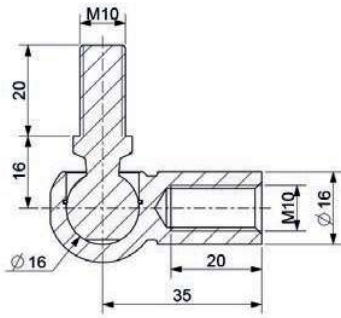
BM's valve tool is used to adapt a gas spring to your application, releasing the internal pressure by short presses on the tool until the desired pressure is reached. Can only be used on BM gas springs equipped with a release valve. Can only reduce pressure.

Available dimensions:

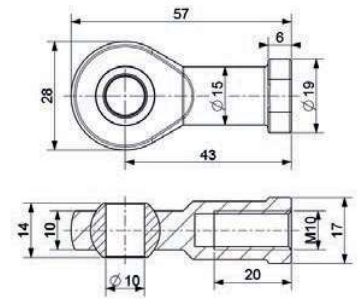
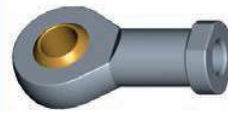
REFERENCES	VALVE THREADING
ST OUT6	M6
ST OUT8	M8
ST OUT10	M10
ST OUT14	M14



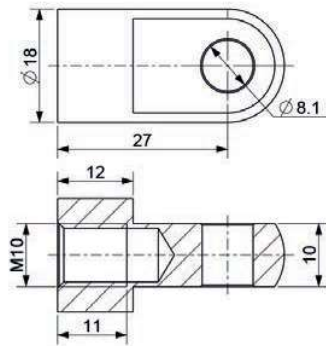
## M10 FITTINGS



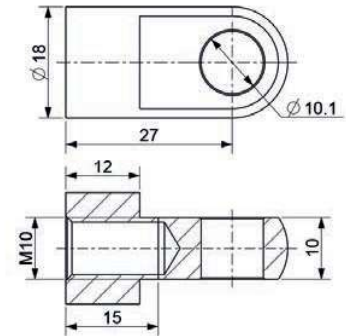
**REF ST 092262-10**  
ZINC PLATED STEEL



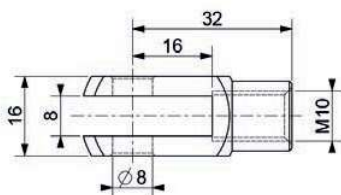
**REF ST Gi10**  
ZINC PLATED STEEL



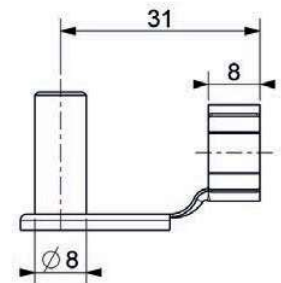
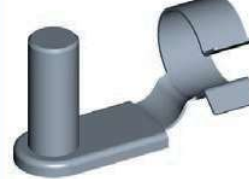
**REF HG CH10**  
ZINC PLATED STEEL



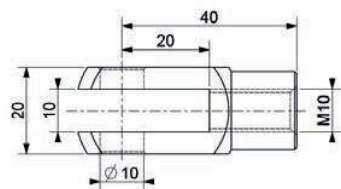
**REF HG CH10-10**  
ZINC PLATED STEEL



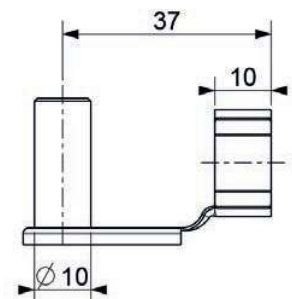
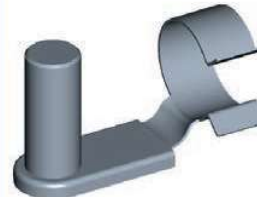
**REF ST F8M10**  
ZINC PLATED STEEL



**REF ST ES8**  
ZINC PLATED STEEL



**REF ST F10**  
ZINC PLATED STEEL



**REF ST ES10**  
ZINC PLATED STEEL